



## Secure Encryption

Our Secure Nokia phones ensure your privacy during the conversation with another user with the same secure software. No matter if you are private person, corporate or VIP: Nabishi Secure Voice software for Nokia phones has a solution for you, secure GSM voice encryption security.

Our Secure phones work against any GSM voice interception.

With high grade security, strong cryptographic protection and certification the our Secure Nokia phone and software ensures your total peace of mind against eavesdropping.

The Nokia Secure Voice phones software is a high security software for mobile GSM communication with up to 5 Layers of protection!

It uses RSA 2048 Master Keys Pair, RSA 1024 Session keys, AES 256, Hardware Random generator and much more to ensure your privacy.

Our Secure Nokia phones and Secure software is rated TOP SECRET level of confidence.

RSA Laboratories currently recommends key sizes of 1024 bits for corporate use and 2048 bits for extremely valuable keys like the root key pair used by a certifying authority.



## Specifications

- Diffie-Hellman key exchange algorithm
- RSA **2048** Master Keys Pair
- Password authenticated key agreement
- MD5 digest algorithm
- Hardware Random Generator
- AES **256** bit symmetric data protection
- RSA 1024 asymmetric session keys
- RSA Streaming protection
- Man in the middle protection
- **Triple** combination of asymmetric and symmetric encryption
- Superior audio quality
- As low latency as possible on target network
- Random session key, replaced **10** times per second

## Nabishi UK Ltd

16c Upton Road, Tilehurst, Reading, Berkshire, RG30 4BJ, England U.K

Tele: +44 (0)118 943 3311 Fax: +44 (0)118 943 3366

email: [sales@nabishi.com](mailto:sales@nabishi.com) - website: [www.securespeech.co.uk](http://www.securespeech.co.uk)



## Nabishi Secure Encryption - Nokia Compatible phones list

Our voice encryption software can be installed on any of the following Nokia phones with Symbian 6.3 operating system. Phones can be purchased with Secure Voice software pre installed or software can be purchased for self installation.

**Nokia N Series**

						
Nokia N70	Nokia N71	Nokia N72	Nokia N73	Nokia N75	Nokia N76	Nokia N77
						
Nokia N80	Nokia N90	Nokia N91	Nokia N93	Nokia N95	Nokia N96	Nokia E90

**Nokia E Series**

						
Nokia E50	Nokia E51	Nokia E60	Nokia E61	Nokia E62	Nokia E65	Nokia E70

**Other Nokia phones**

						More Coming Soon!
Nokia 3250	Nokia 5500	Nokia 6120	Nokia 6630	Nokia 6680	Nokia 6681	

### Important

In order to use this system your phone must be enabled with DATA call (CSD Line) on your SIM card and the phone must be used on a GSM network (UMTS, 3G, CDMA network standards are not currently supported by our Secure Voice GSM). These services may not be available via all operators, and may require separate subscription.

Our voice encryption software must be installed on each separate handset to create a 100% guaranteed secure connection. A secure encrypted connection cannot be created between a cell phone which has software installed and a cell phone which does not have software installed.



## Nokia Application Installer

Your Nokia phone will have been supplied with the Nokia Application Installer (see picture below) this application is normally supplied on CD or can be downloaded from the Nokia website. After installation connect your phone to your PC with the supplied USB lead and run the Nokia Installer Application.

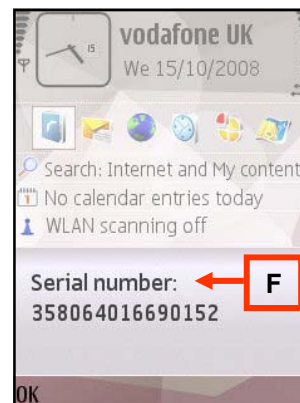
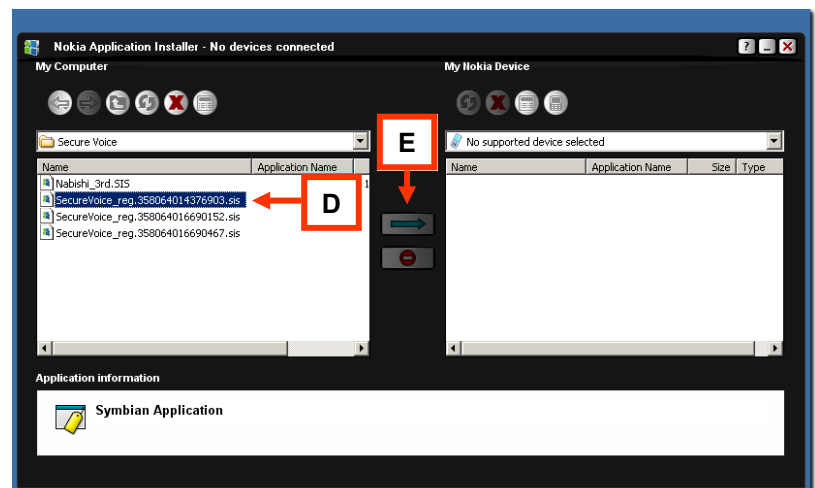
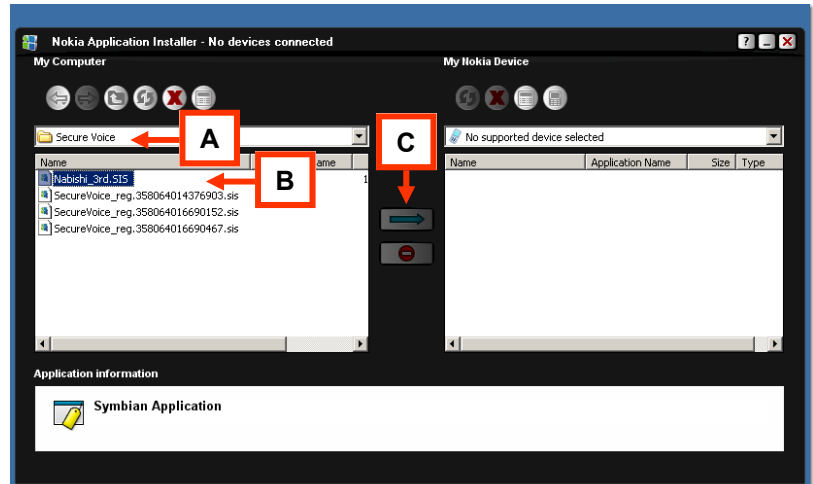
## Installing Software into your Nokia

After purchasing the Nabishi Secure Voice software, you will be supplied with the following files:

- Nabishi Secure Voice Installation Software: **Nabishi\_3rd.sis**
- Registration Licence Key: **SecureVoice\_reg.123456789.sis**

*(the number on the end correspond to the IEMI number which you supplied will only work in the phone with the same IEMI number)*

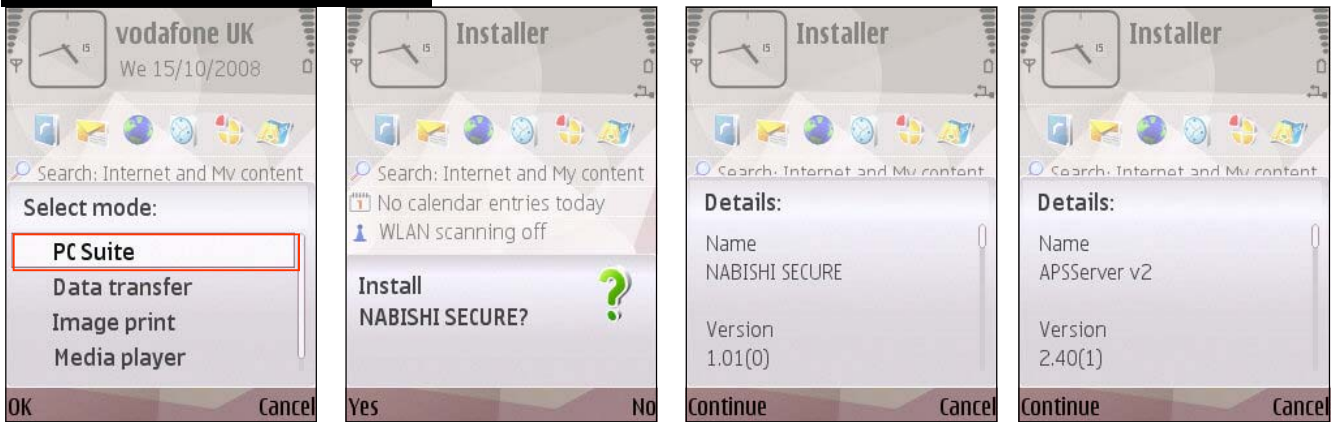
1. Make a folder on your desktop and name it (for example) "Secure Voice and copy the files into this folder". If installing into more than one phone you will be given a Registration Licence Key for each phone you have registered.
2. From the Nokia Installer Software select the Secure Voice Folder [A] from your desktop and its contents will be displayed [B].
3. First highlight the **Nabishi\_3rd.sis** file
4. Then click on the UPLOAD button [C]
5. Follow the on screen instruction on your Nokia phone (as detailed on the following pages)
6. Then highlight the Registration file called SecureVoice\_reg.12345678999.sis [D] (the numbers will be the same as the IEMI number of the phone you are installing into. If you are not sure what the IEMI number is type **\*#06#** [F] into your phone and the IEMI number will be displayed. Click [E] to UPLOAD the file to your Nokia phone.



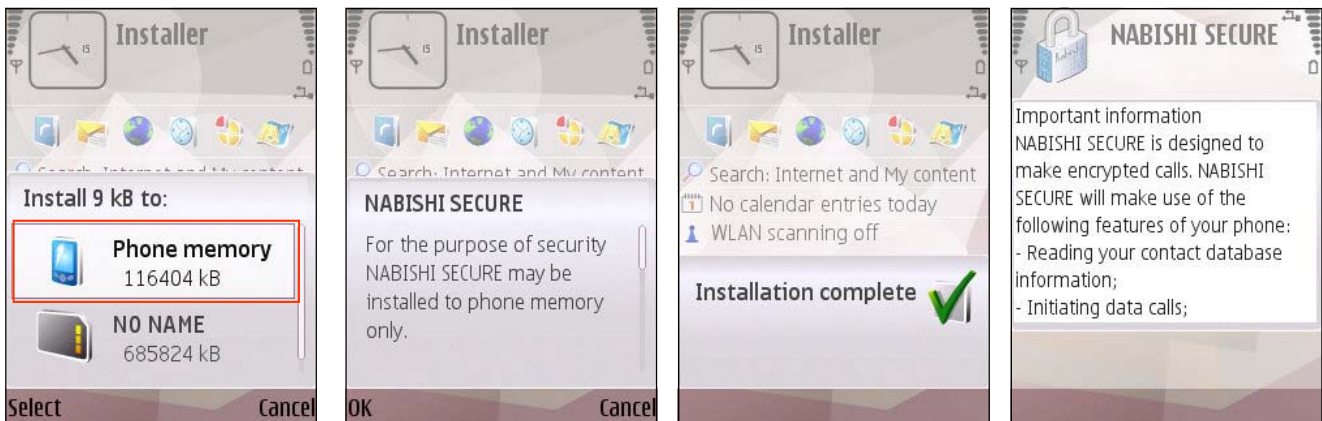
Type **\*#06#** in your phone to show its IEMI (Serial number)



## Installing Secure Voice Software

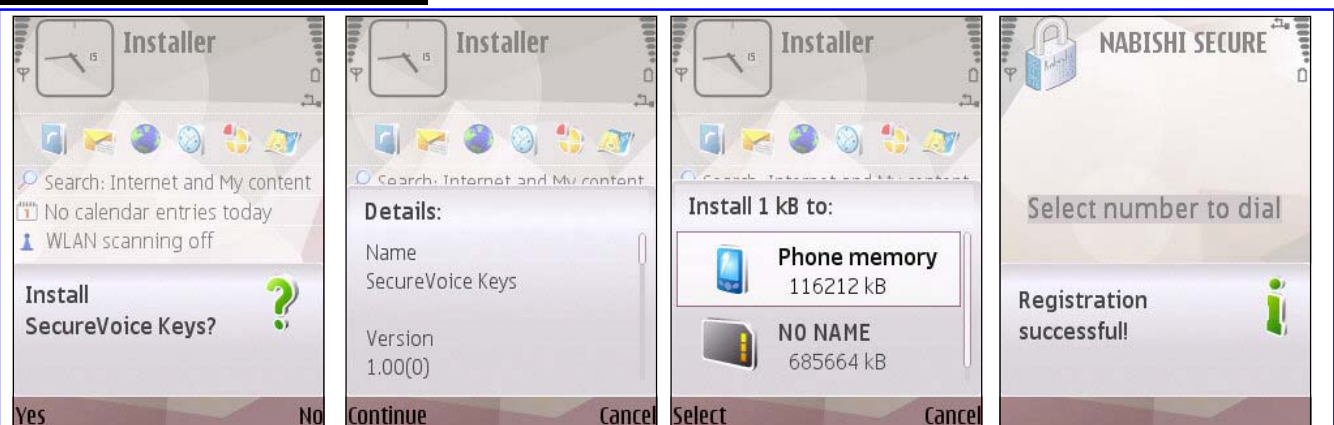


After uploading the Software from Nokia Application Installer these messages will be displayed on your Nokia



Simply accept all notices and ensure that you install the software in the **“PHONE MEMORY”**

## Installing Secure Voice Keys



After the Secure Voice Software installation, the Secure Voice Keys application will show similar notices which much also be accepted. Please install the software in the **Phone Memory**. After completion the **Registration Successful** notice will be displayed when you start the main Secure Voice Software, **only if the correct Registration Key** was used with the right phone.



## Important Configuration after installing software into your Nokia Phone

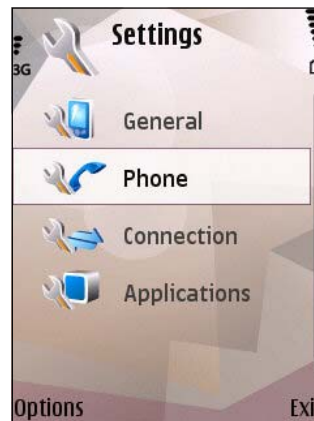
After completion of installation and before launching the Secure Voice Software from the Applications Folder you must first configure your phone to run in **GSM Mode**. Then you must go to the Secure Software **Options** menu to **TURN AUTOSTART ON**. This will ensure that the application launches and runs in the background whenever the phone is switched on. You must **REBOOT** after completion. The complete procedure is described here:



Menu > Tools



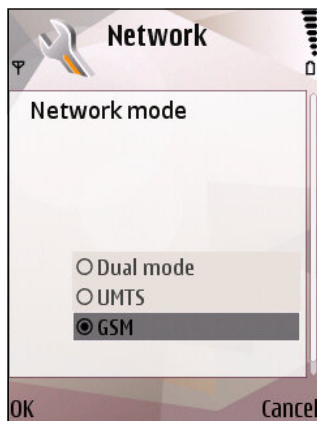
Settings >



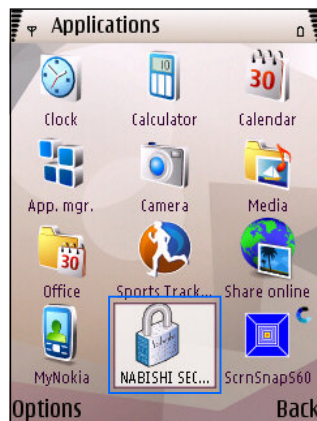
Phone >



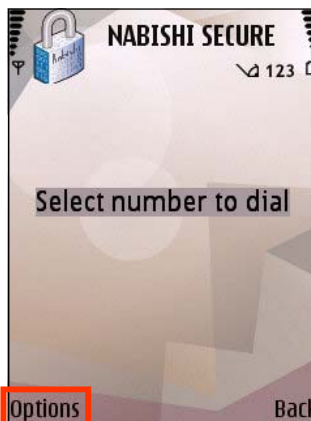
Network >



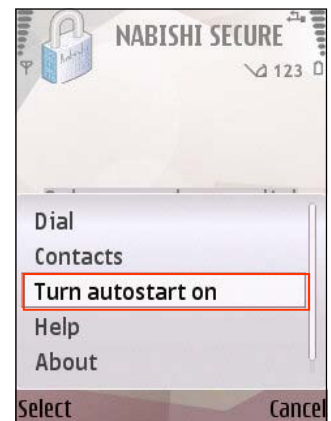
Select **GSM** then **OK**



Launch Secure Software



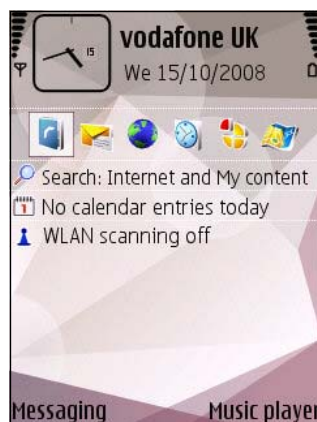
Go to **OPTIONS**



Select **AUTOSTART ON**

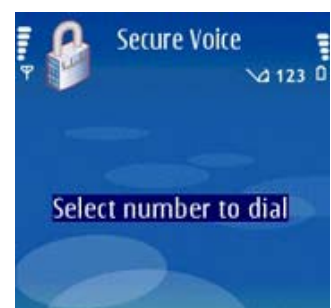
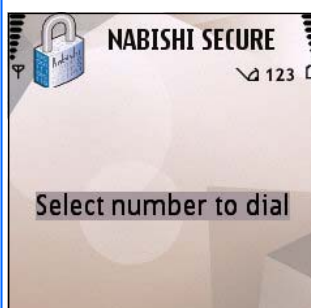


**NOW REBOOT THE PHONE!!**



the Secure Phone is now ready for use

### Theme Variations



#### Please Note

The Theme/Colour of the software will depend on the THEME you are using on your Nokia Phone



### Important

In order to use this system your phone must be enabled with DATA call (CSD Line) on your SIM card and the phone must be used on a GSM network (UMTS, 3G, CDMA network standards are not currently supported by our Secure Voice GSM). These services may not be available via all operators, and may require separate subscription.

### To make a secure call



#### MENU BUTTON

The Nabishi Secure software continues to run in the background and can be quickly launched by **pressing and holding** the MENU button on your Nokia phone for several second when you will see the NABISHI SECURE icon. Select this icon to bring the application up and then follow the following easy steps to make a secure call.



Enter the **DATA** number of the other secure phone or select a stored number from your contacts list by pressing the **Options** button.

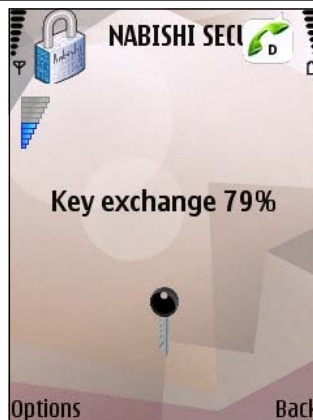
### Call Sequence



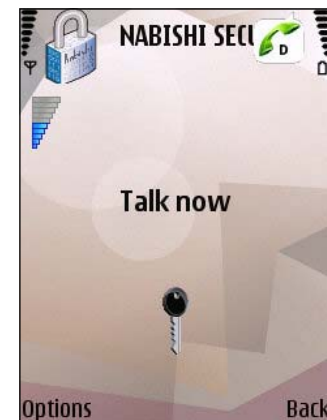
After a **DATA** number has been entered or selected from the Contacts list press the send button and the display will display the above message.



When the caller answers the call both phones will authenticate the call by exchanging keys with each other.



IF both phones have **NOT** connected to each other before the key exchange this may take up to 15 seconds and the above message will be displayed.



After Authenticating both phones will display the above message and you may now talk in total confidence. Press end to end the call in the usual way.

### To make a Normal Call (Clear Mode)

Normal calls in clear mode are made by closing the Nabishi Secure software application (by pressing the **BACK** button and using the phone's keypad in the usual way. The Nabishi Secure Software will continue to run in the background and can be selected again by using the **MENU** key as described at the beginning of this page.